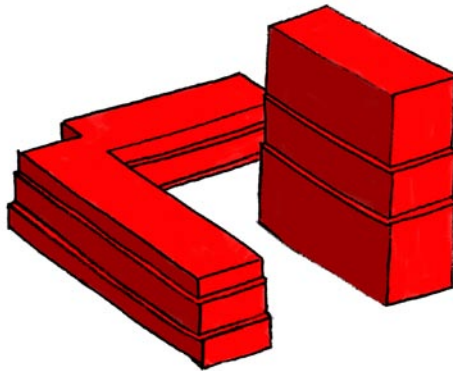


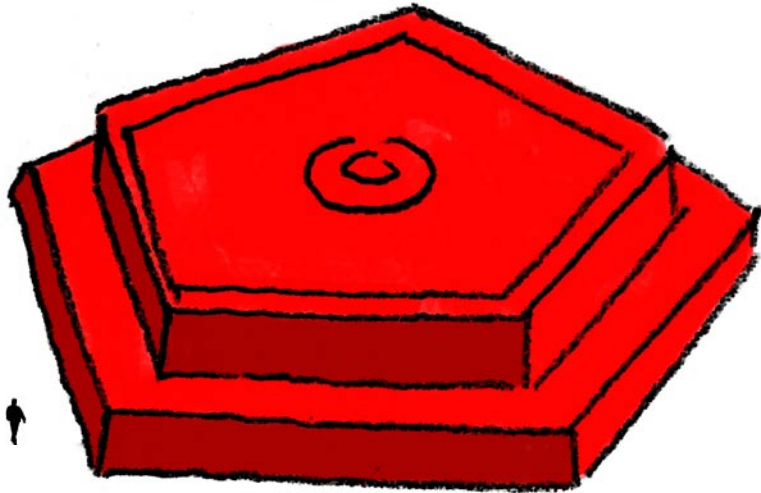
Note d'intention / Le Havre 2017  
août 2015

Laure Delamotte-Legrand

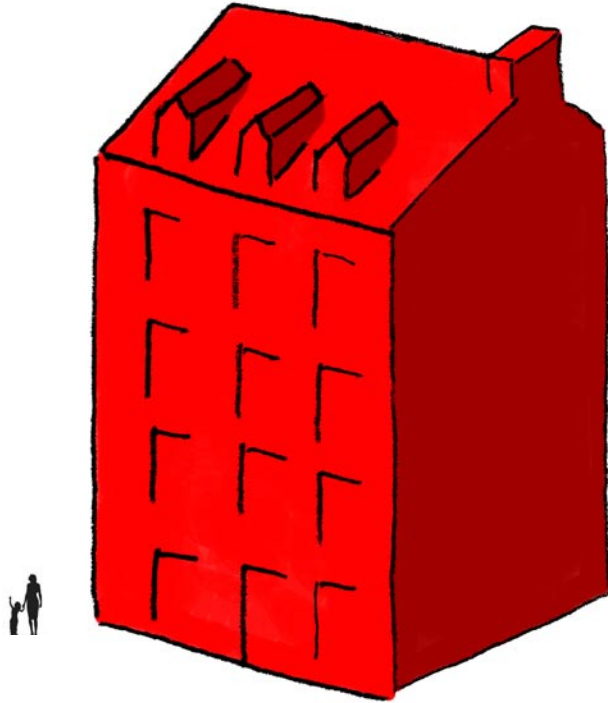


*territoires magiques*

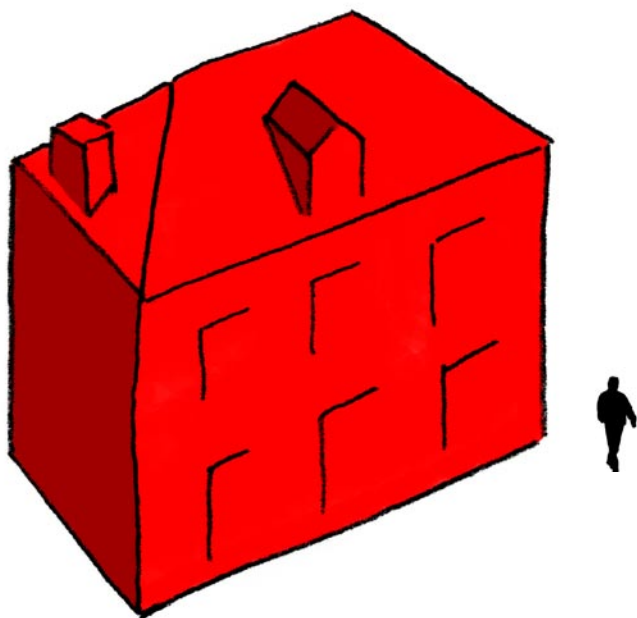
Les typologies architecturales



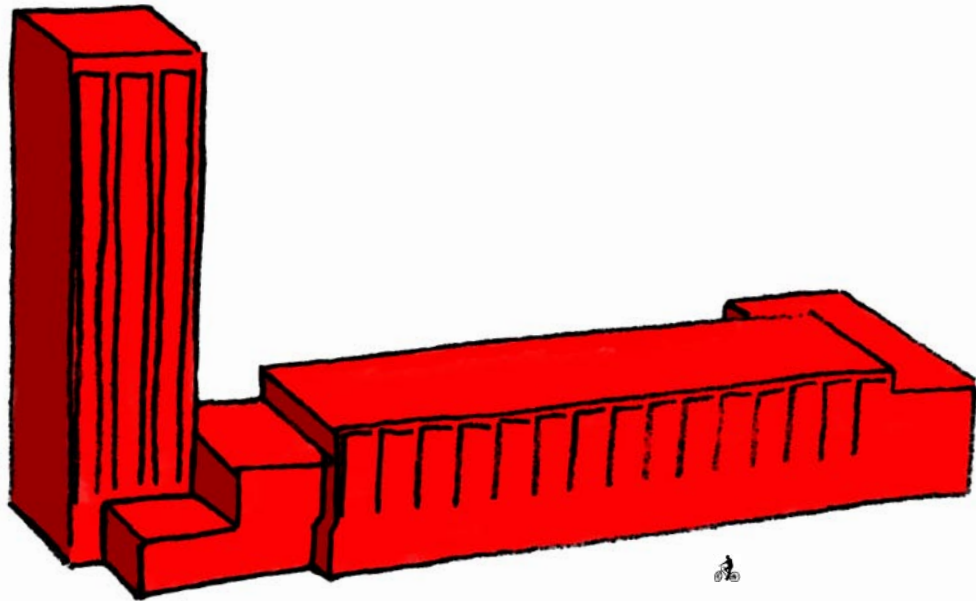
la halle aux poissons



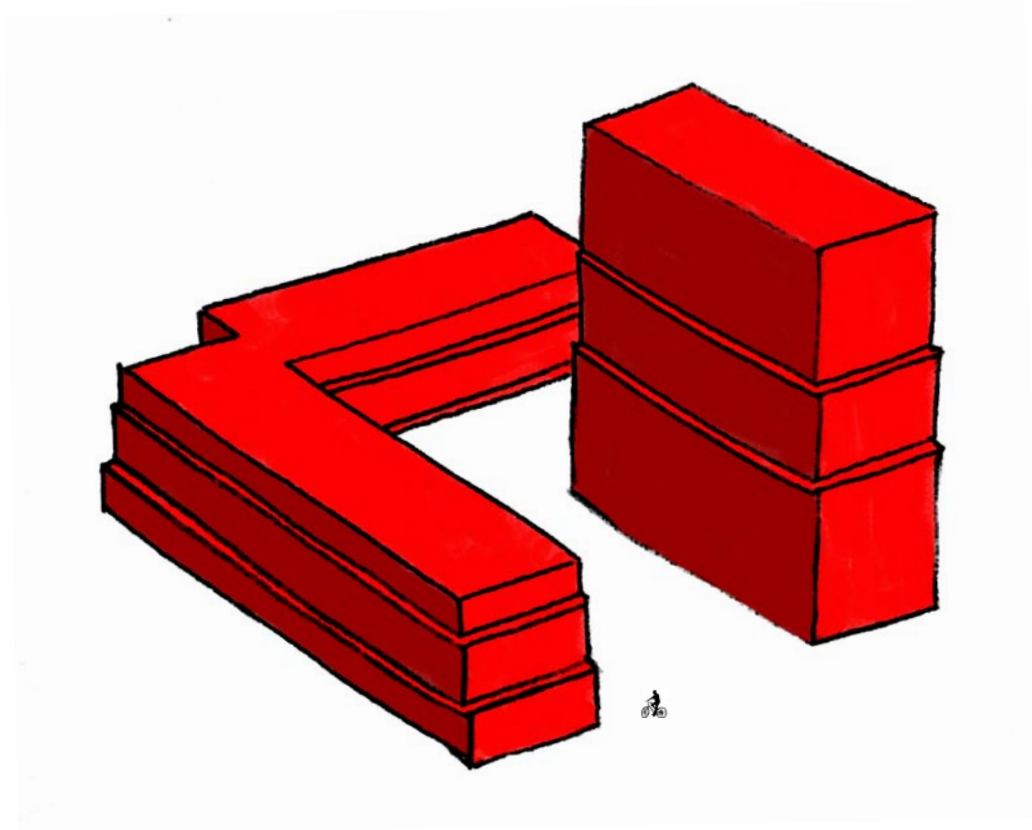
l'immeuble de centre ville  
quartier Danton, quartier de l'Eure



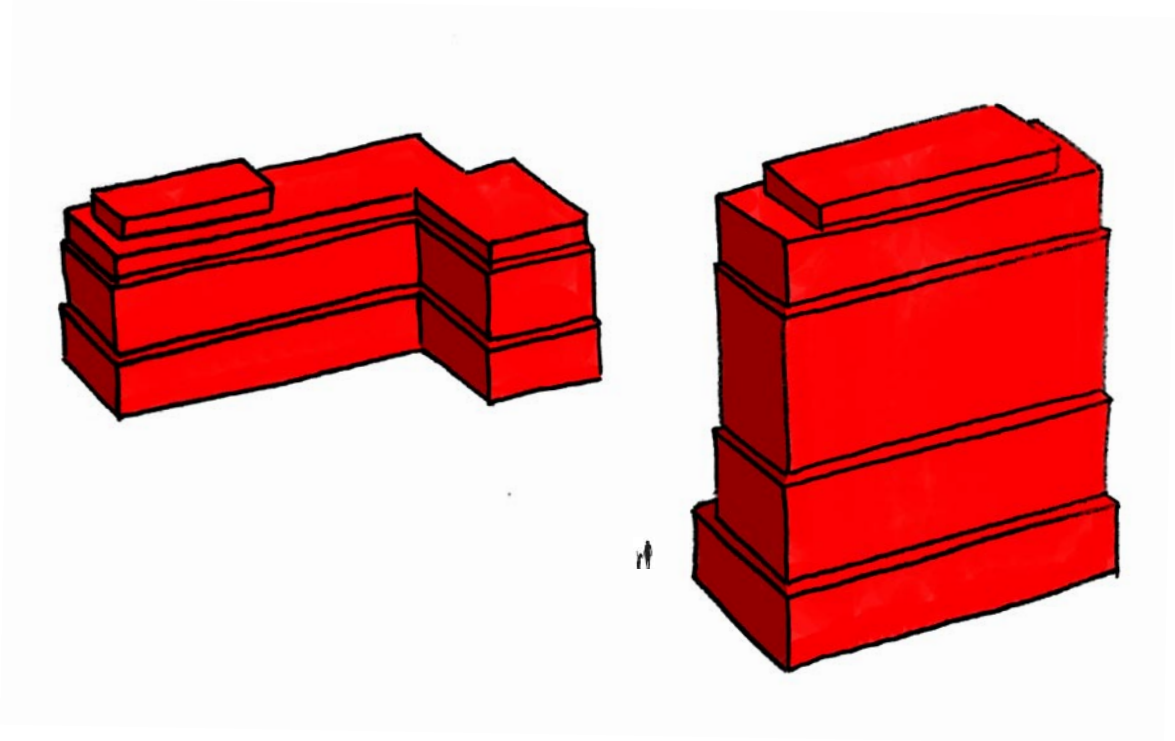
la sanvicaise  
maisons individuelles, quartier Panvic



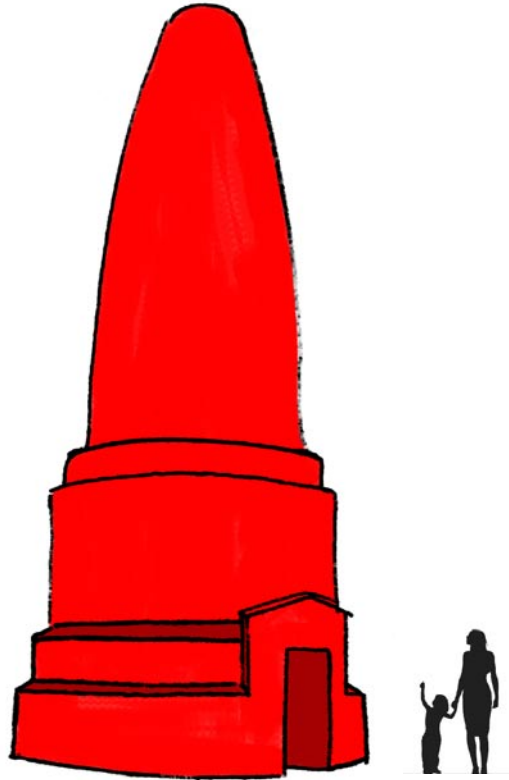
l'Hôtel de Ville  
Auguste Perret



le V40  
immeubles Perret, place de l'Hotel de Ville

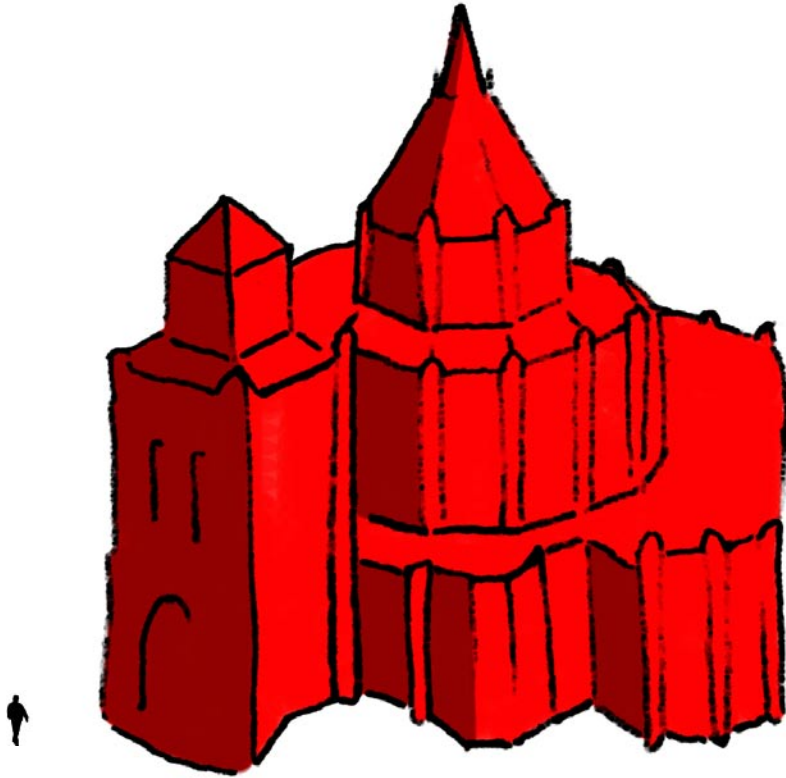


la Porte Océane  
immeubles Perret, front de mer

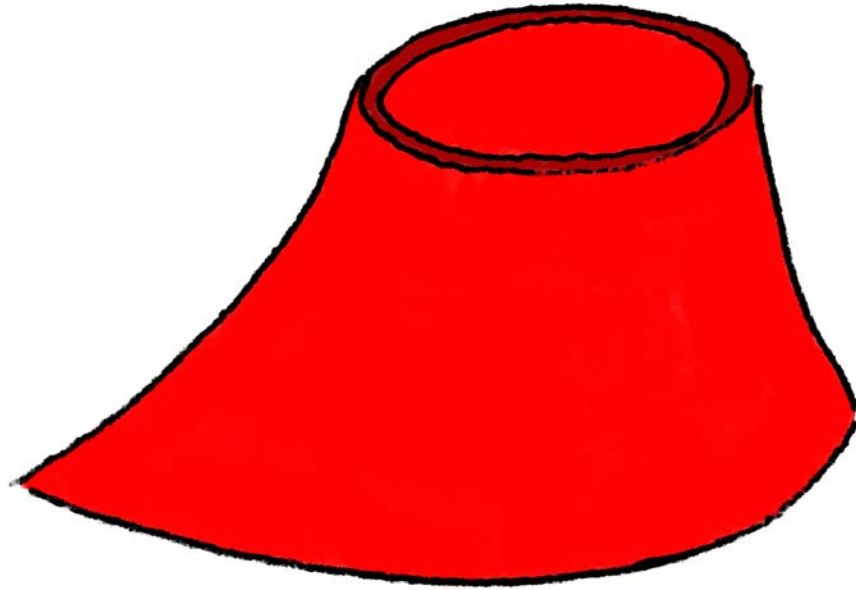


le pain de sucre  
Sainte-Adresse

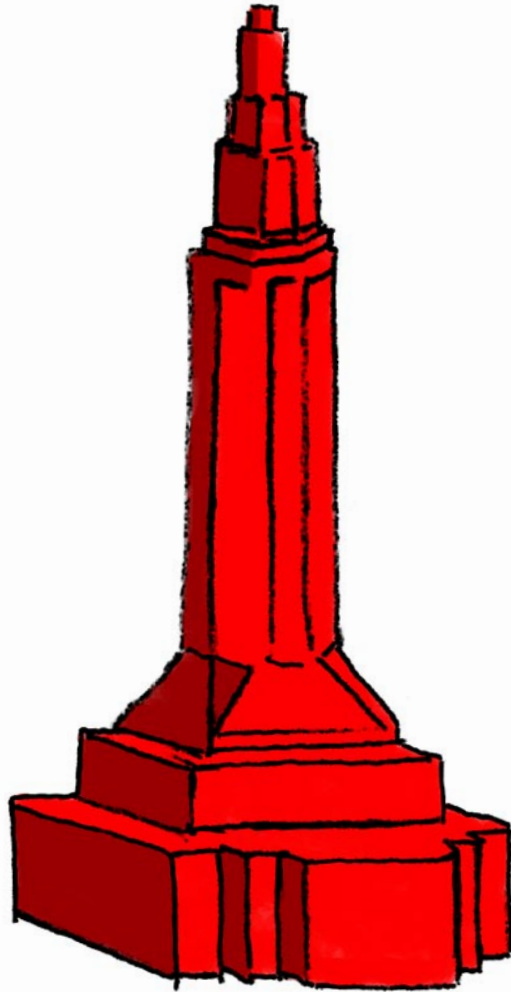




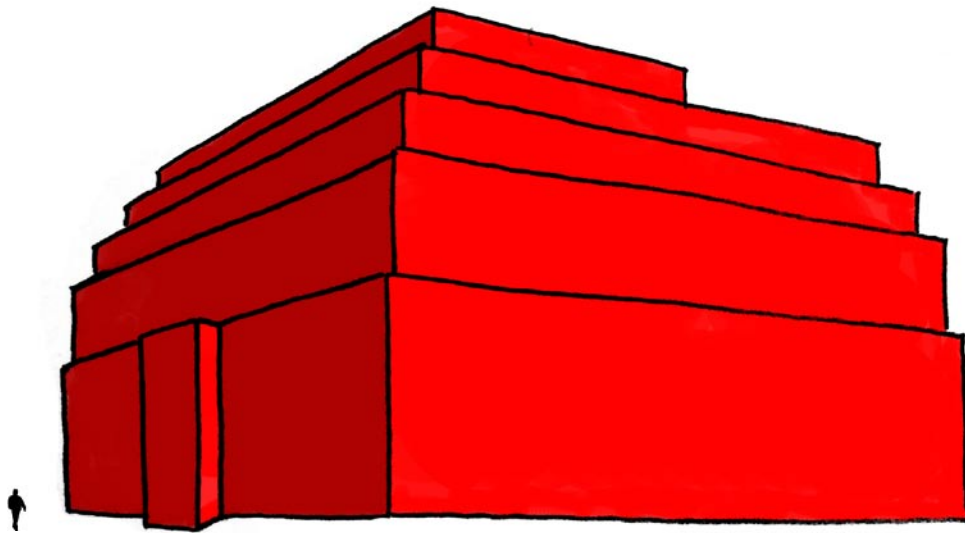
église Sainte-Cécile



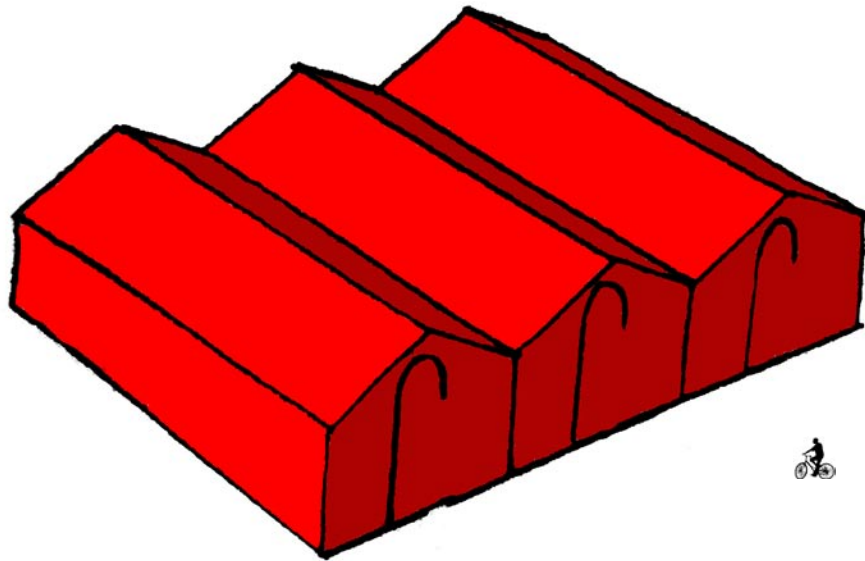
le Volcan  
Oscar Niemeyer



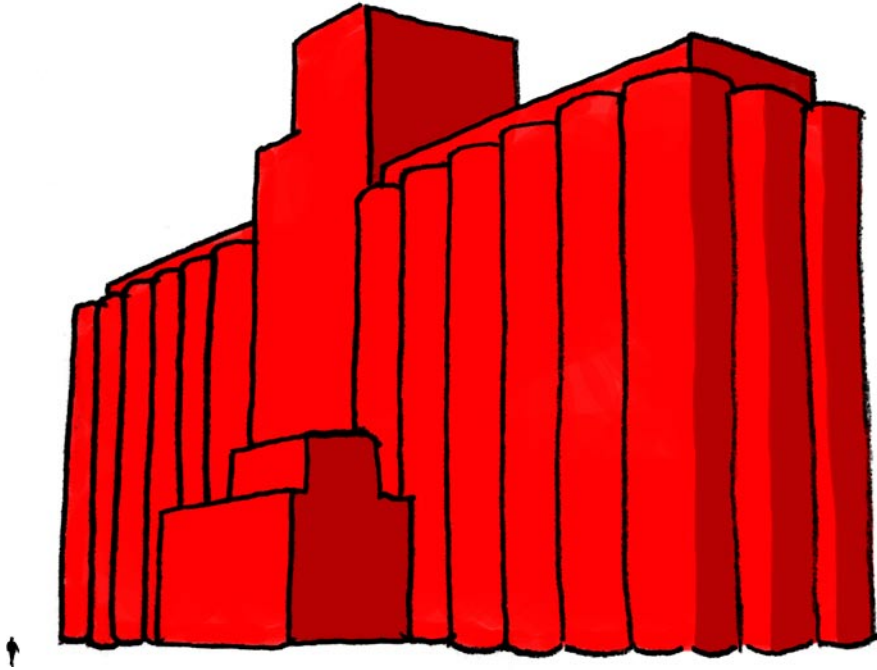
église Saint-Joseph  
Auguste Perret



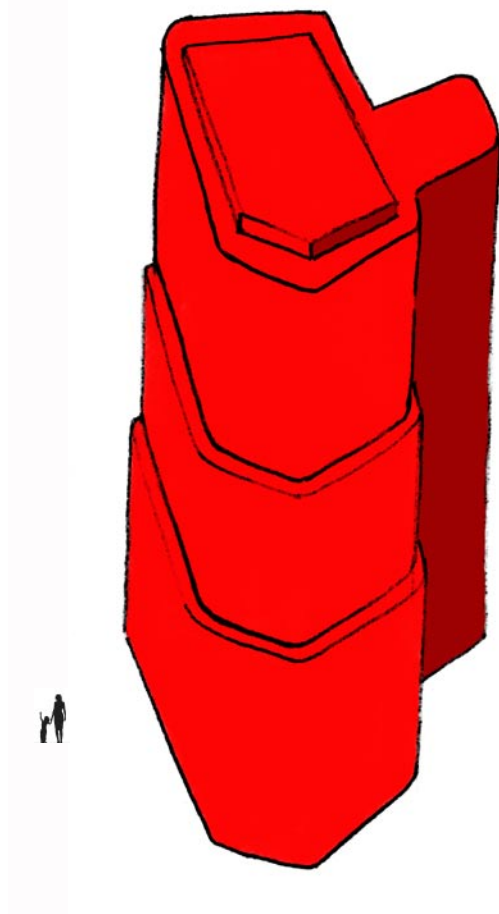
le Franklin, Bld de Strasbourg  
architectes Henri Daigue et Emile Molinié



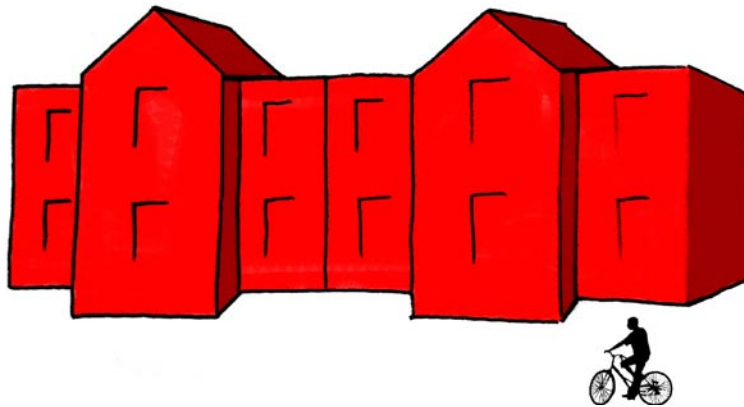
les Docks  
quartier de l'Eure



le silo  
port du Havre

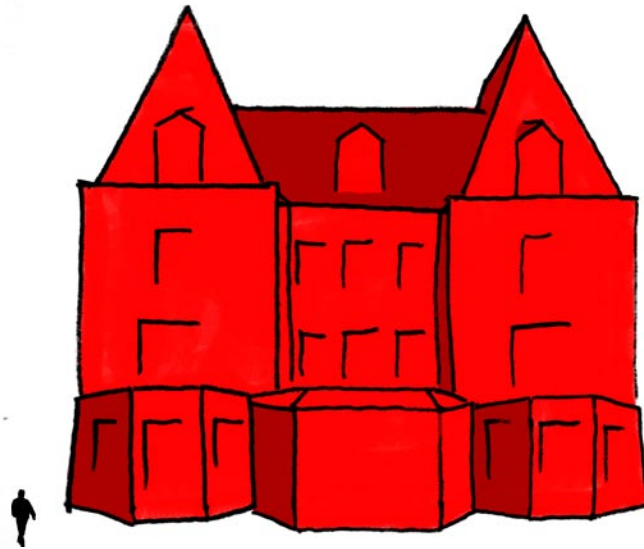


le Transatlantique  
front de mer, architecte Henri Daigue

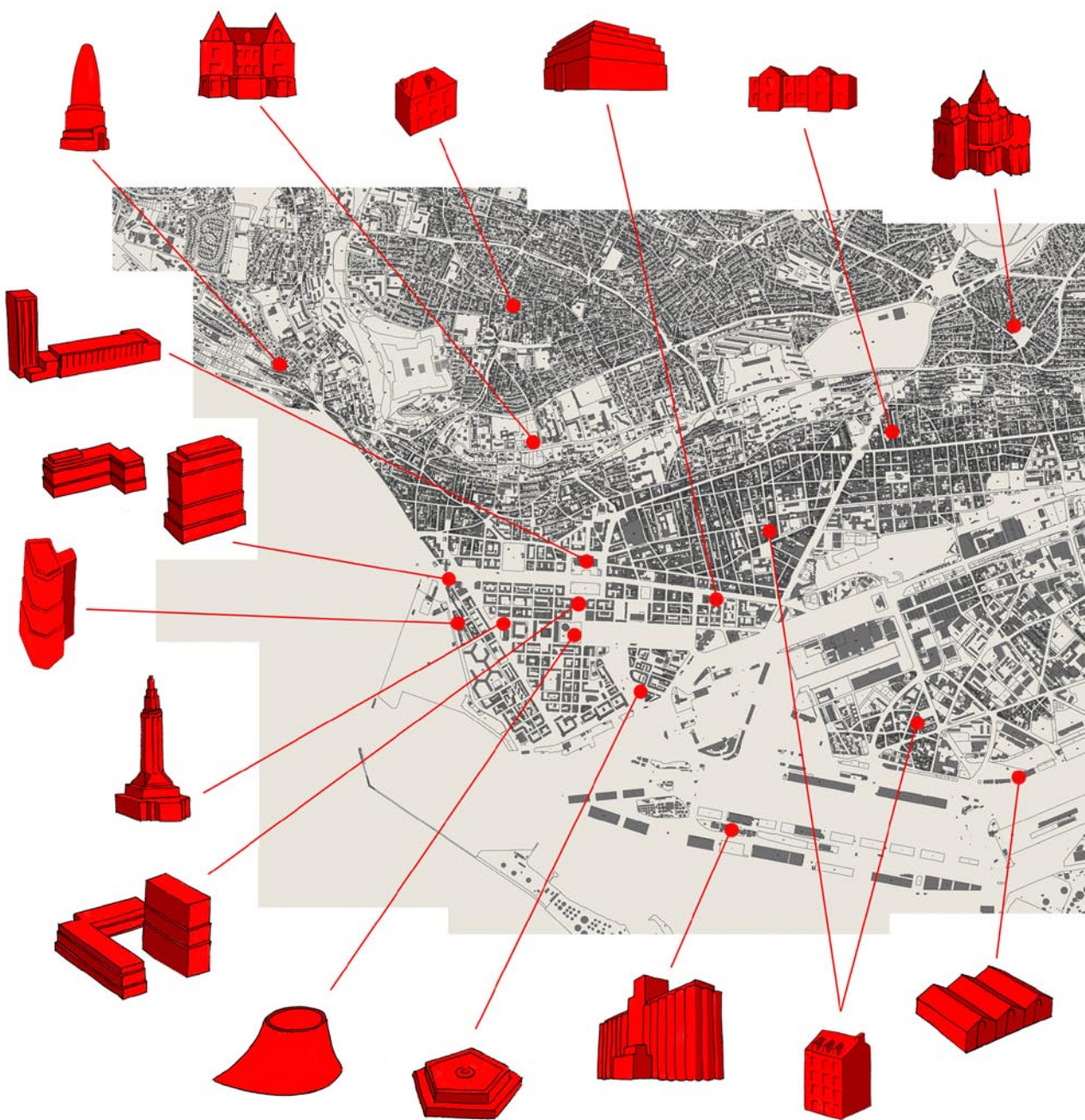


la maison ouvrière mitoyenne  
rue de la Cité Hawraise, quartier Rond Point





la maison de maître  
la Costière Ouest



*cartographie des typologies répertoriées*

Laure Delamotte-Legrand

**BALZAAL**

[www.laure-delamotte-legrand.org](http://www.laure-delamotte-legrand.org)

[laure\\_dl@hotmail.com](mailto:laure_dl@hotmail.com)

+ 33(0)6 22 10 07 49